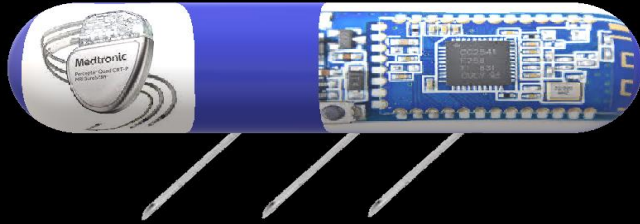
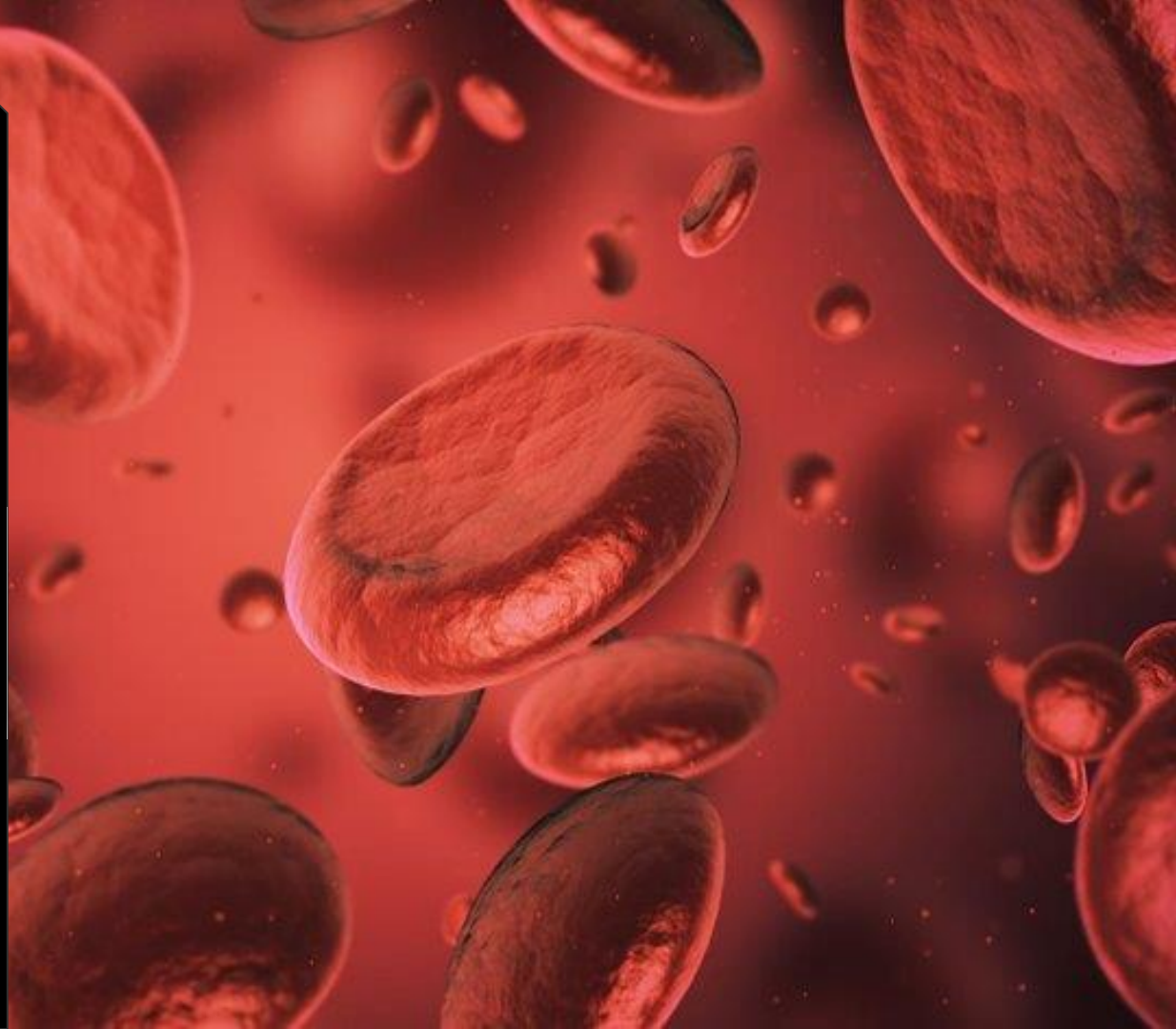
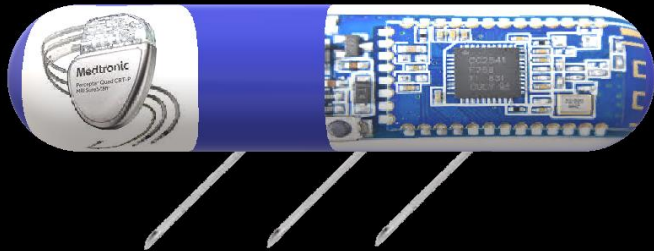


Blood Disease Chip



By: Greg P, Kiera C, Xavier W
Presented by: Kiera Coats





Problem

Not being able to identify
Anemia, Hemophilia, Leukemia, Lymphoma,
and Myeloma

Blood disorders+Cancers	Hemophilia	Anemia	Leukemia	Lymphoma	Myeloma
% of the population affected	1.9%	25%	.55%	4%	.76%
Average death rate	18.9%	50% chance	30%	28%	47%



publicdomainvectors.org

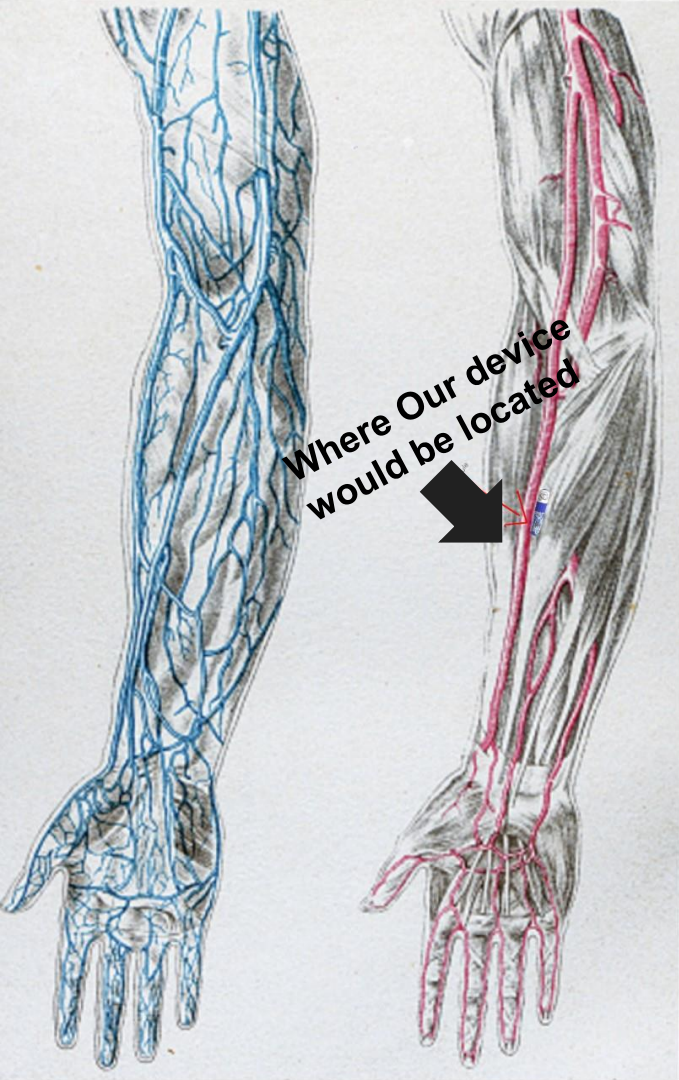


shutterstock.com - 767768554

What does this product do?

- Inserted in the arm
- Attached to a vein
- Samples the blood for any abnormalities.
- Mobile alerts
- Gives detailed info on the problem
- Typically stays in for 6 months





Benefits

- Less Hospital visits
- Blood status from mobile device
- Better, faster and more efficient
- No more testing with unnecessary needles
- Lower stress levels for patients

Target market

Our target market is hematologists

Price:\$100 including implant procedure

possible Business Partners:

- Labcorp- A modern clinical facility
- Theranos- A privately held corporation with breakthrough health technology



Advertisement

- Medical Journals/ Magazines
- Hospitals
- Hematologists
- Medical sales representatives



Thank you

[Blood disorders: Types, symptoms, and causes -](#)

[Medical News Today](#)

<https://www.medicalnewstoday.com> > articles

[Blood Diseases | NIDDK](#)

<https://www.niddk.nih.gov> > Health Information

[Blood Disorders - Hematology.org](#)

<https://www.hematology.org> > education > patients > bloo...

Stainless steel capsule-



-Lithium Iodide Battery

Silicone Flexible probe-

-Bluetooth Chip, and
electrical components

Implant
applicator
with
camera—

